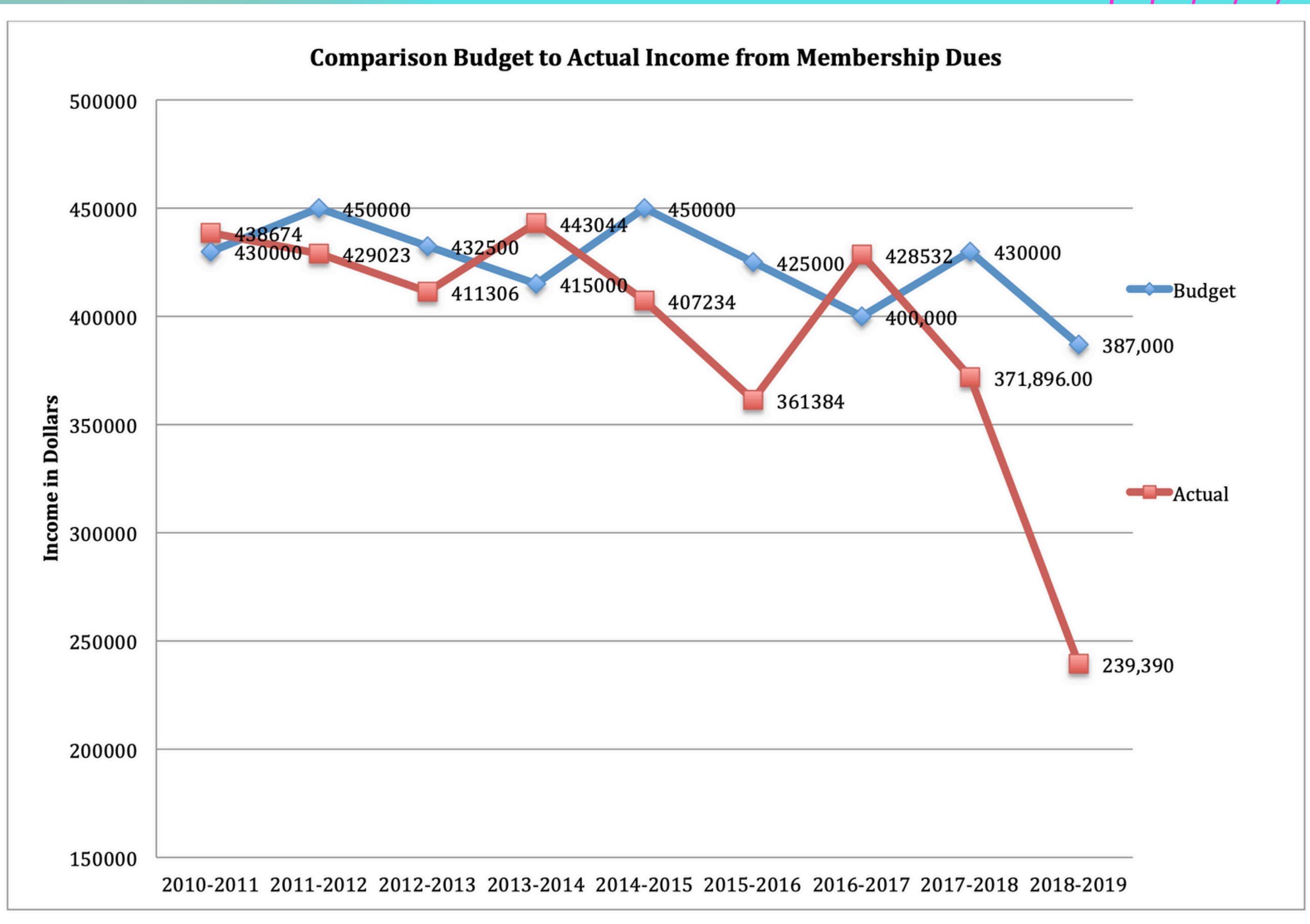


MIAMI DADE BAR

BUILDING FOUNDATION

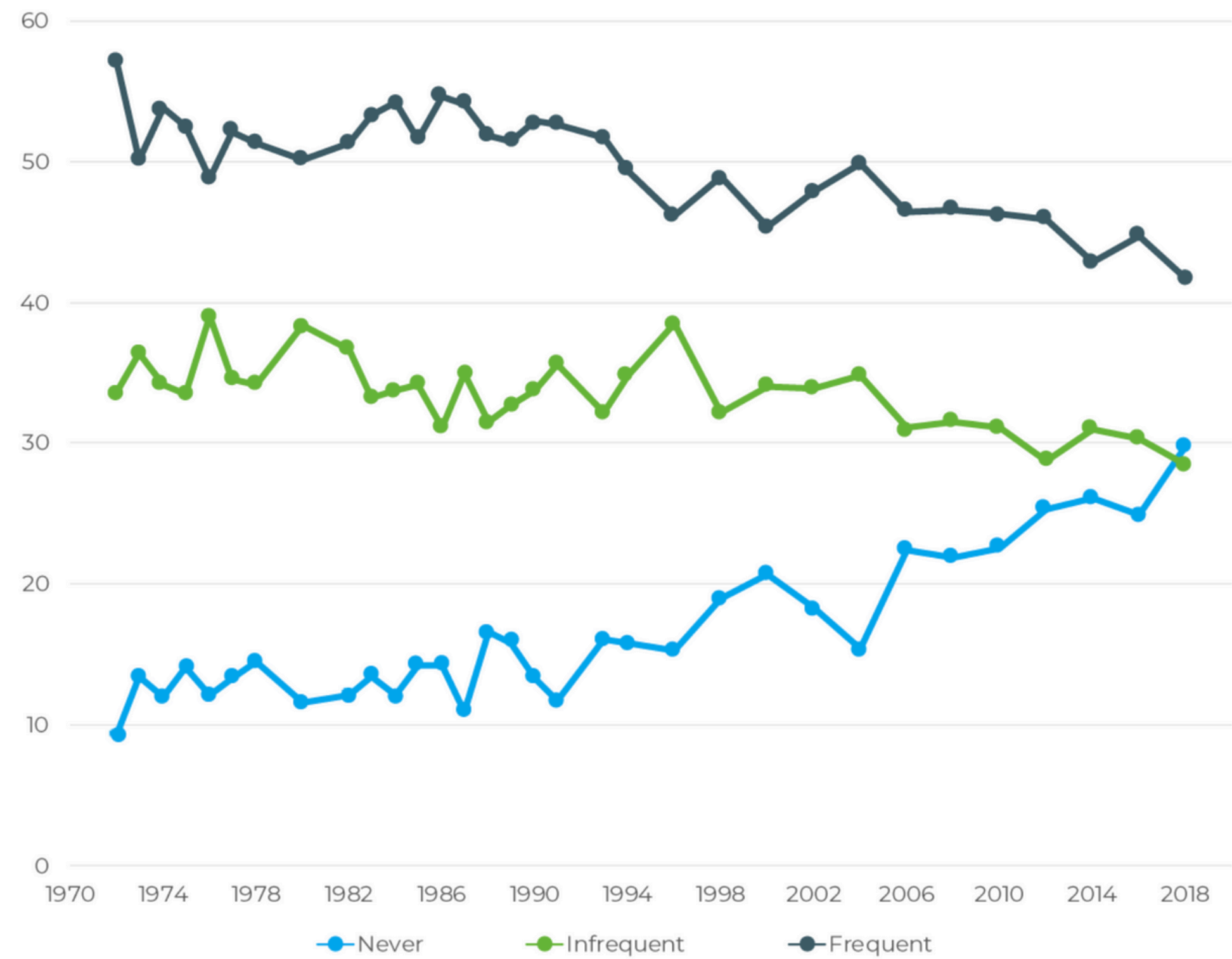


Background



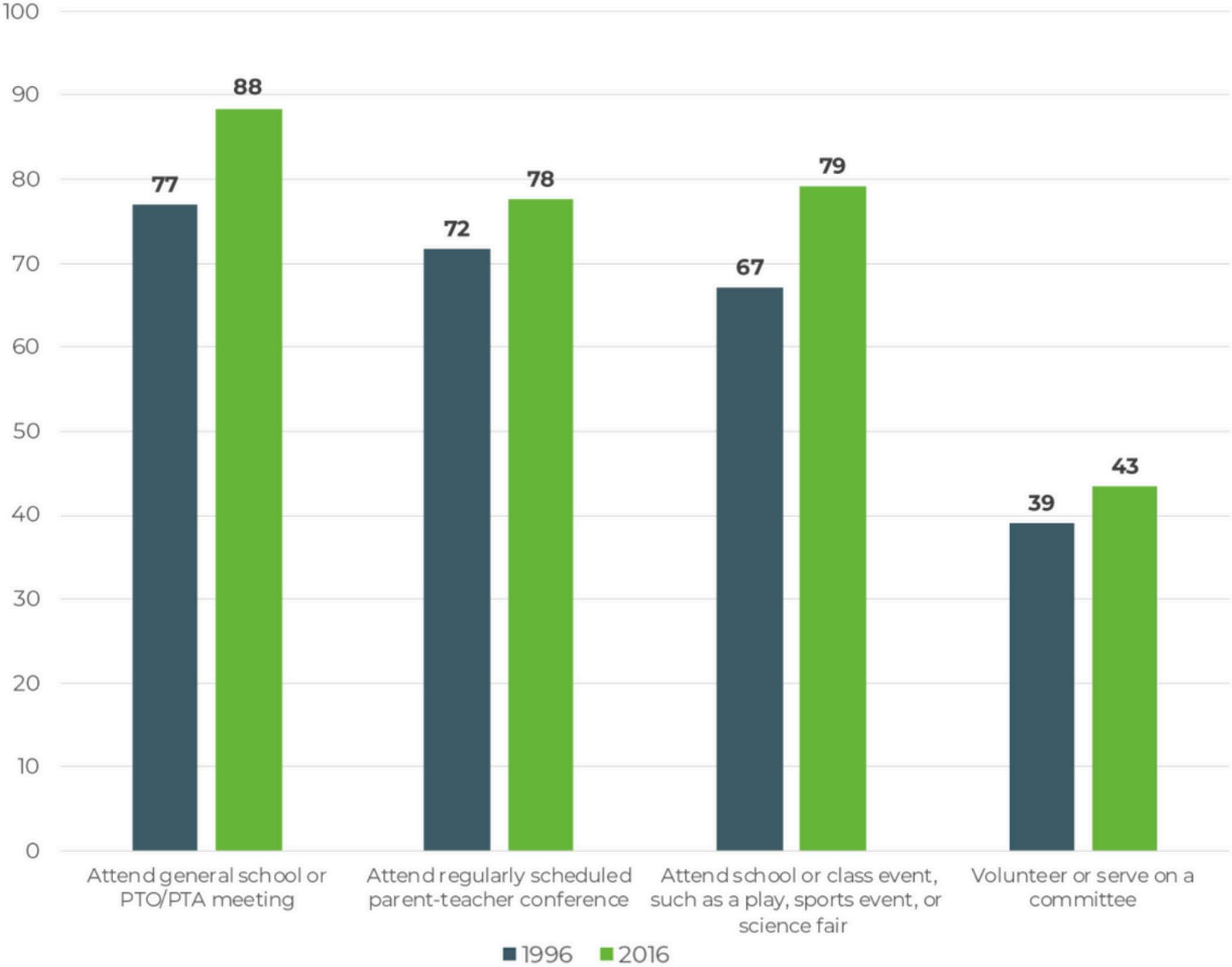
Source: IRS 990 Filing Data

Figure 4. Religious attendance among U.S. adults



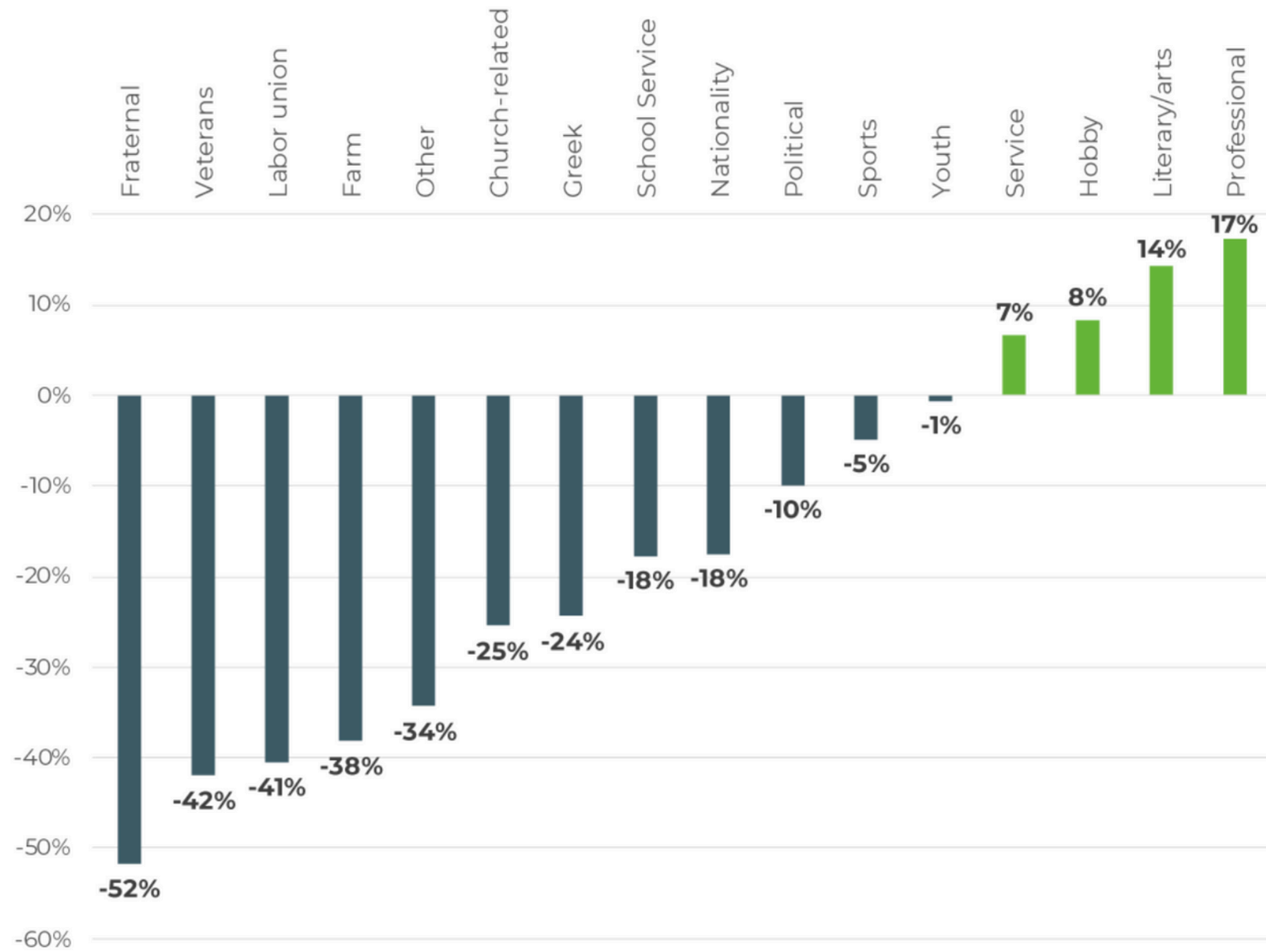
Source: Social Capital Project analysis of General Social Survey, 1972-2018. "Frequent" attendance is defined as self-reported attendance at religious services at least once per month.

Figure 6. Percent of parents or guardians reporting participation in select school activities

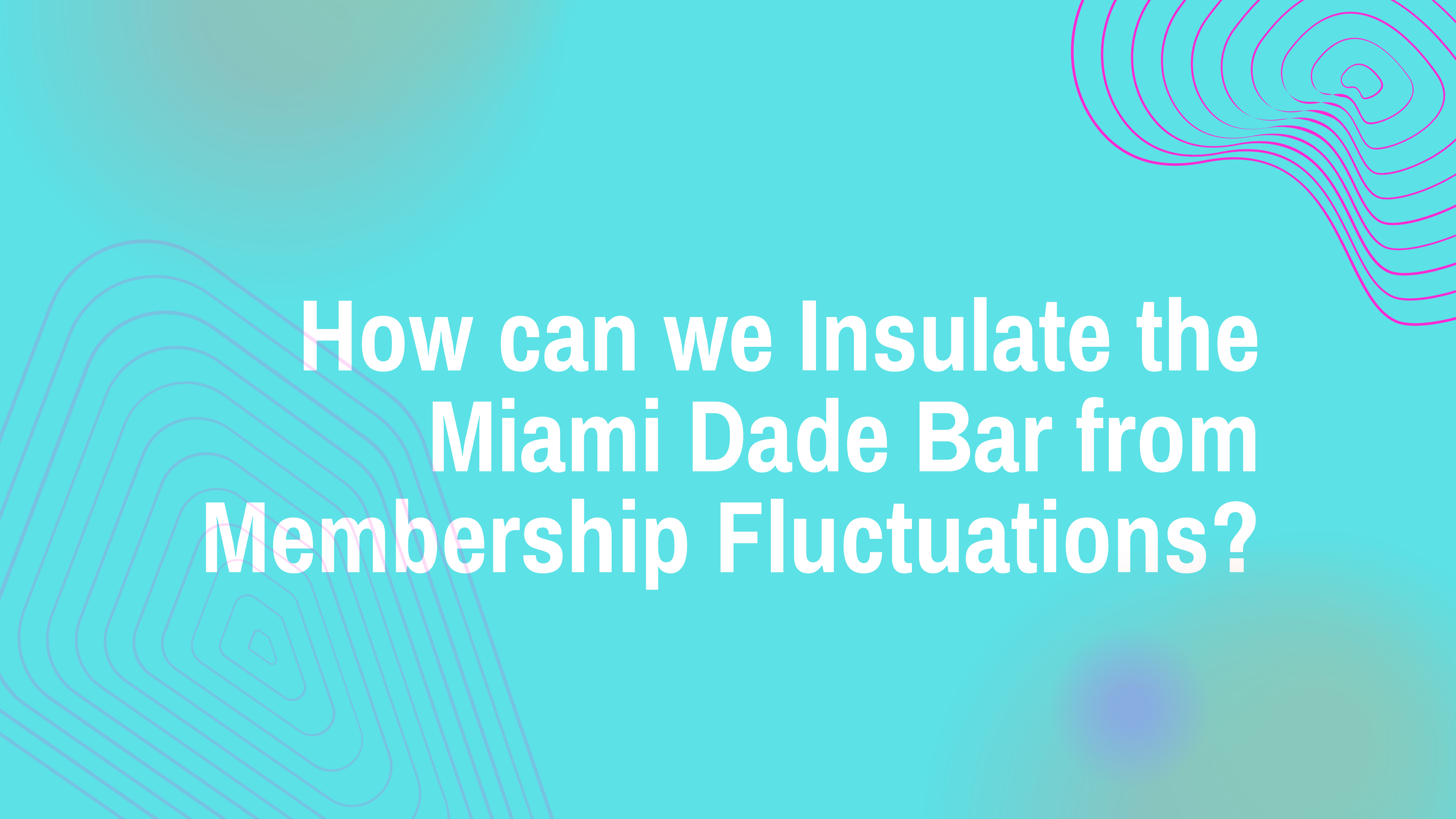


Source: Social Capital Project analysis of Parent and Family Involvement in Education Survey, 1996 and 2016.

Figure 7. Percent change in membership rates for select organizational types, 1974-2004



Source: Social Capital Project analysis of General Social Survey, 1974 and 2004. Note that the chart displays percent changes in membership *rates* – that is, the percent of adults who were members of an organization in a given year – and not absolute membership *numbers*.



How can we Insulate the Miami Dade Bar from Membership Fluctuations?



Generate More Revenue from Assets and Programs

- 
- **Membership**
 - **LRS**
 - **Events**

The background is a solid teal color. In the bottom-left corner, there are several concentric, wavy lines in a light purple color, creating a ripple effect. In the top-right corner, there are several concentric, wavy lines in a light teal color, also creating a ripple effect. The word "Building!" is centered in the middle of the image in a large, white, sans-serif font.

Building!

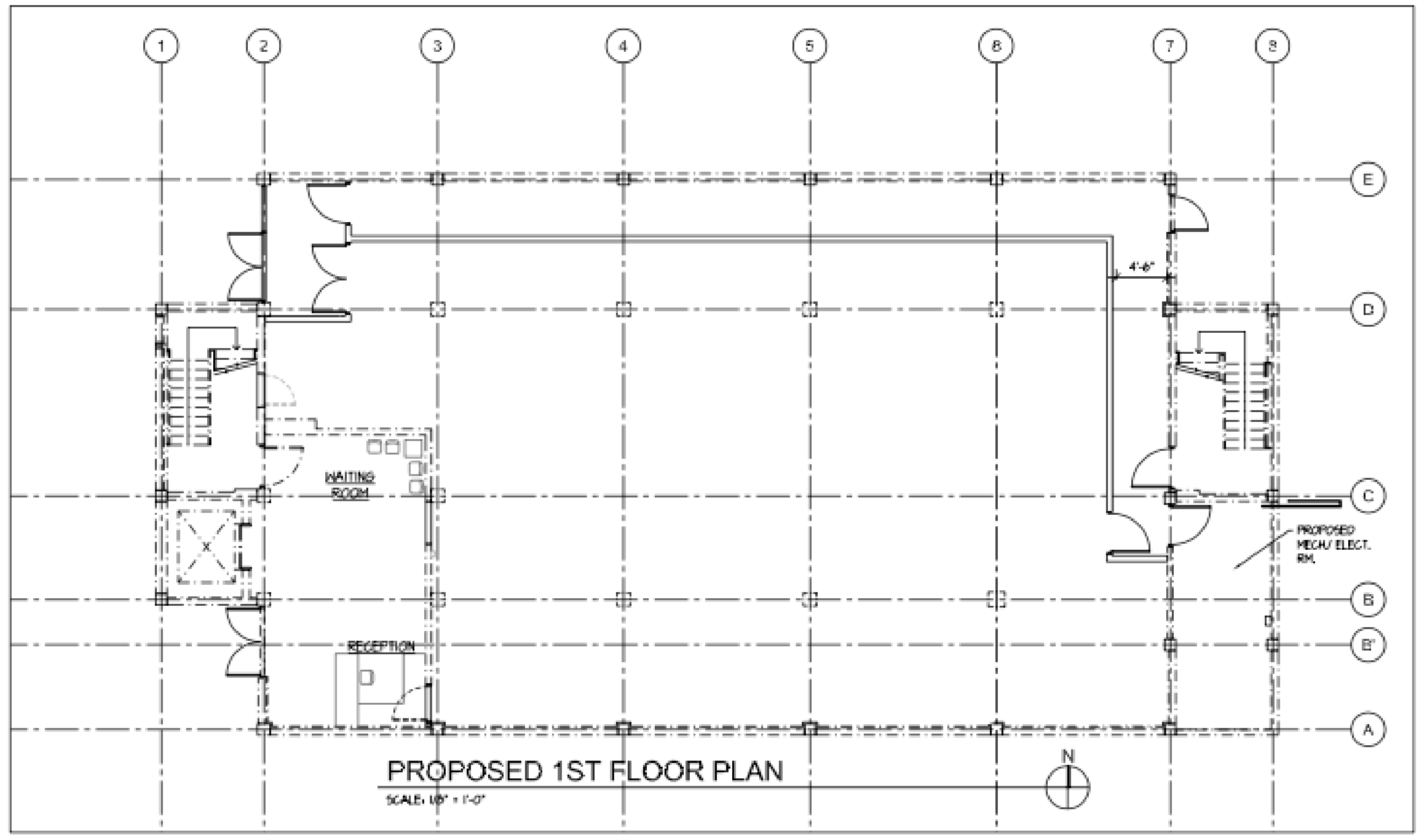
2019 Review of Options

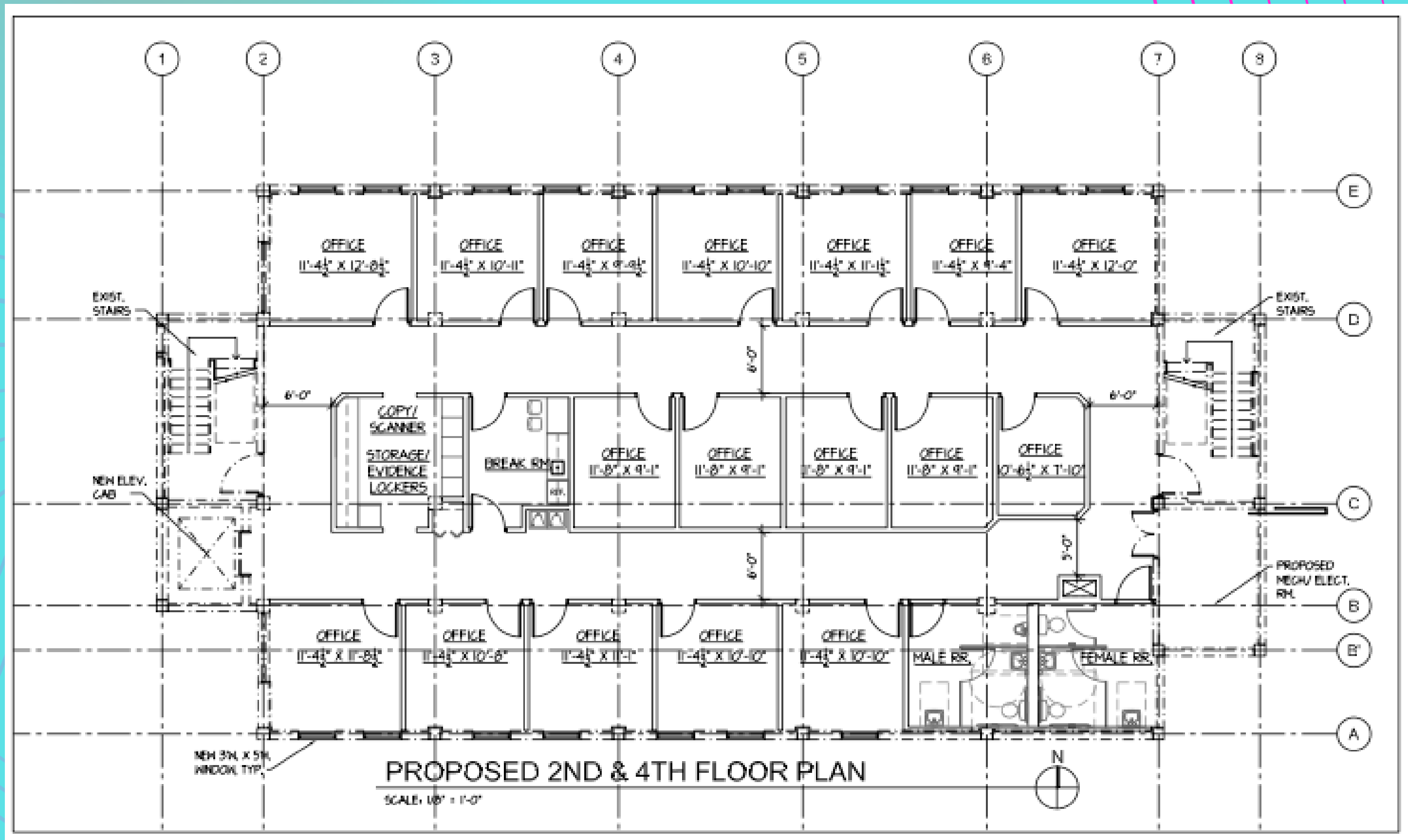


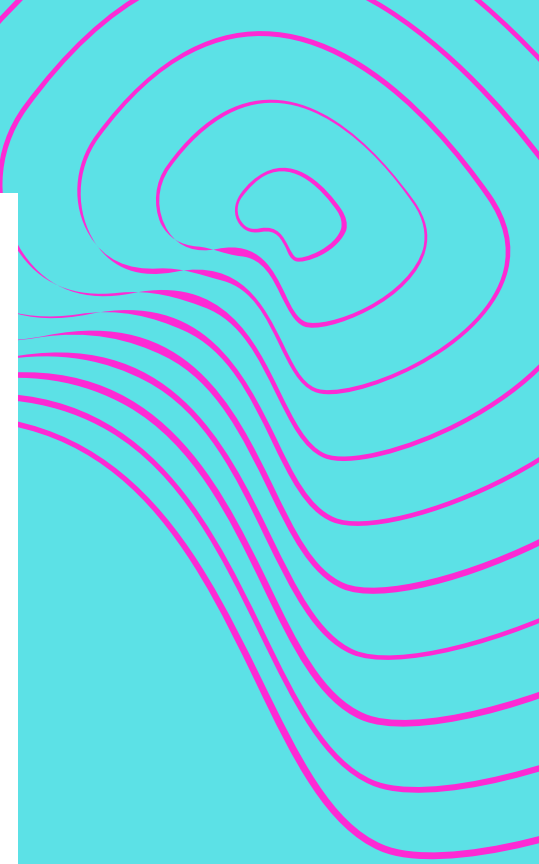
Board elected renovation with Coworking Plan

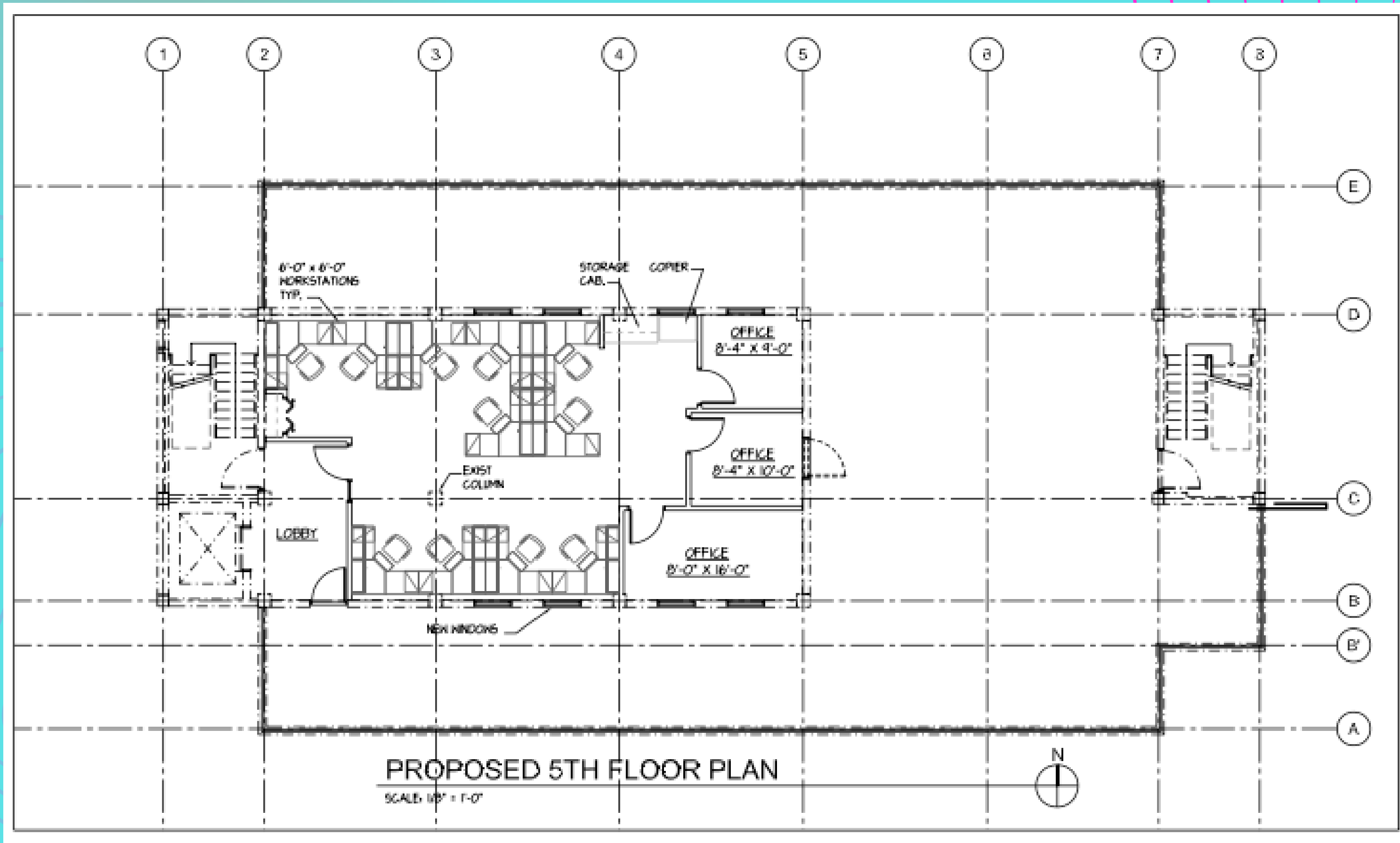


Board elected renovation with Coworking Plan



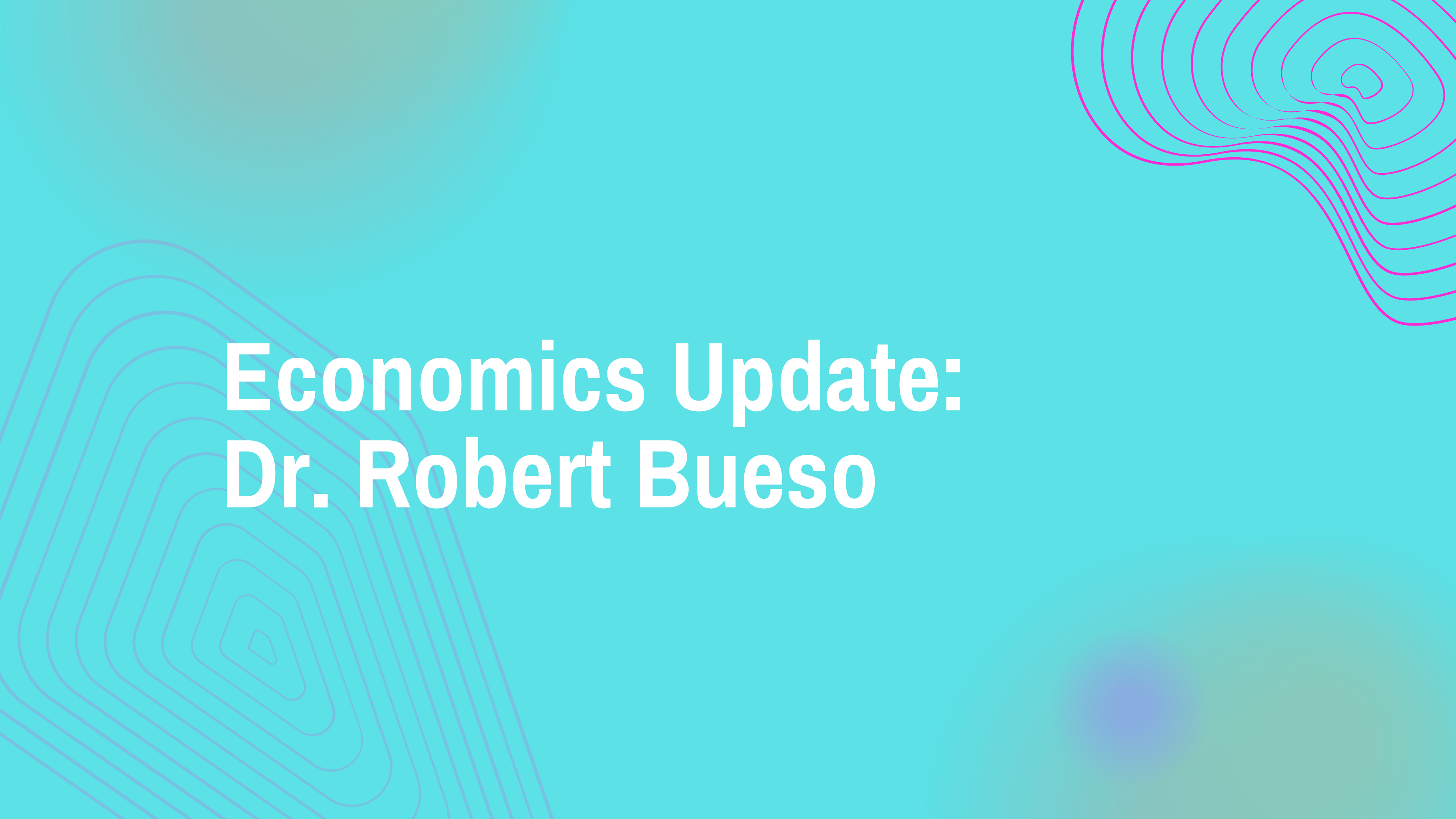








Construction Update: Michael Falke



Economics Update: Dr. Robert Bueso



Questions?